

**CARIDILUX**  
industrial light

## Streetlight P-Line / HP-Line

LED Lighting tools for cost-efficient,  
environmentally friendly and future proof road lighting.







This is your light. 



# Streetlight P-Line / HP-Line



220-240 Vac / 50 Hz	Max. opera- ting height: 50 m	Operating temperature -30 - 60 °C	Optional: Emergency Lighting
Express mounting technology	IP 65	SKI	CE

Characteristics / Luminaire Type	Streetlight P-Line / HP-Line
Your requirement	     
LED maintenance factor 100,000 Hrs (Projected value)	L70B20C10
LED maintenance factor 60,000 Hrs (Calculated value)	L75B15C5
LED maintenance factor 50,000 Hrs (Measured /calc. v.)	L80B10C3
Ambient Temperature (°C max.)	60
Modular construction	yes
Heat sink contamination cowl	yes
Twin rowed LED module to avoid hot spots	yes
Thermally de-coupled LED module	yes
Driver module heated by LED module convection	no
Large area, glare free emission	yes
Individual lense or reflector per LED source	yes
CRI 70+ / optional CRI80+	yes / yes
Express mounting technology	yes
LED module and PSU exchangeable	yes
Option: DALI	yes
Ingress protection (IP)	65
Maximum operating height (m)	50
Option: Emergency Lighting	yes
Option: Makrolon cover as per IFS for food processing	yes
Certifications	CE

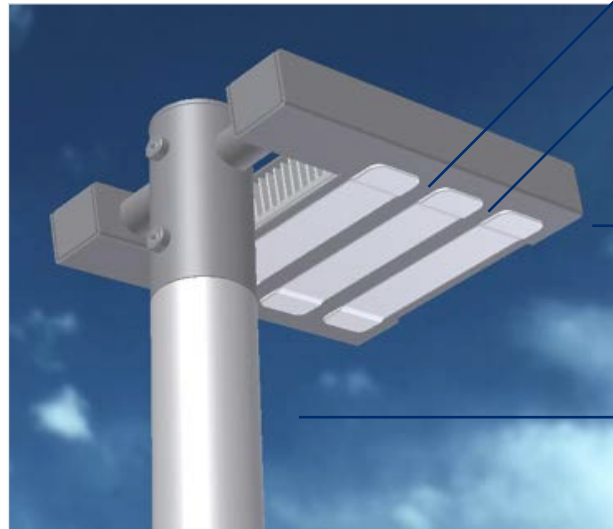
## Streetlight P-Line and HP-Line

## Maximum efficiency in every detail

State of the art LED technology meets outstanding photometric and a modular concept that luminaires are upgradable and fit for the future. Candilux Streetlight P-Line and HP-Line: An outstanding solution for fully compliant and highly efficient illumination of main roads, residential streets and side streets.

### They are one of the best of its class:

- Maximum future compatibility via modular design and repeat purchase possibility
- Rapid amortization of capital cost via major energy savings
- Convincing environmental protection via reduction of carbon dioxide and material preservation
- Upgrade options to future LED generations for higher performance.
- Outstanding quality of light thanks to sophisticated lighting technology
- The LED modules and power supply unit can be replaced independently of each other.
- Perfect visibility: Streetlight P-Line and HP-Line achieves perfect visual conditions. The high quality of light with neutral white light supports well-being and the same sense of security for residents and thus improves quality of life as well as a pleasant atmosphere.
- Light on the road, not in the sky



### 1 LED Quality

Only the latest LED technology with highest quality is sourced from brand manufactures.

### 2 Lighting Technology

Optimized lighting technology ensures maximum light reaching the illuminated area.

### 3 Thermal Management

The sophisticated thermal management effectively dissipates heat from the LEDs, thus increasing LED efficiency

### 4 Design concept

The modular concept allows further increases in efficiency from future LED modules to be optimally exploited. The modular concept allows to choose between the best suited power class: e.g. P30S, P60S, etc. Stainless steel housing offers typical Candilux quality over decades. Housing colors can be chosen by the customer.



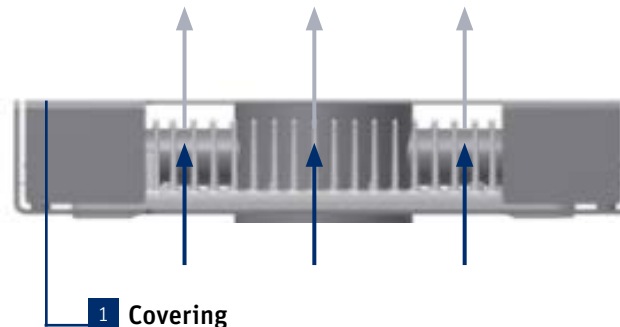
## An efficient cooling system for a long service life

Streetlight P-Line and HP-Line are characterised by long-life and low maintenance. The decisive factors in this regard are the high performance thermal management systems. These defend against heat, the gravest enemy of the luminaire. Each model of Streetlight P-Line and HP-Line with its higher lumen yield takes advantage of the sophisticated cooling system with special air apertures between every LED modul. Sophisticated and covered cooling ribs are protected against dirtying for sustainable high performance. Effective thermal management helps to save energy, because the better an LED luminaire is cooled the better is the ratio of luminous efficiency per watt.

The physical principle of convection is used to highly effectively dissipate the heat produced by LEDs. Convection describes a flow movement produced by differences in pressure: cool air flows below to the luminaire housing. A part of the air flows past the housing on the sides, the other part vertically through air apertures in the housing. The rising air dissipates the heat and pulls cooled air through after it.

**Very important:** Only covered cooling ribs are able to supply sustainable perfect LED cooling, high lumen output and long life.

## The convection principle



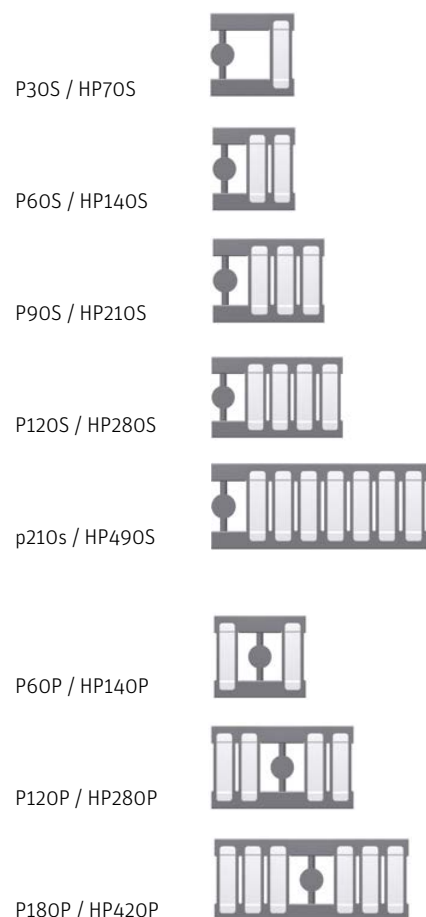
The cooling ribs below the covering are protected against pollution. This feature guarantees sustainable perfect LED cooling, high lumen output and long life!

## Perfect for new systems and modernization

Streetlight P-Line and HP-Line can be used both as a post-top and side entry luminaire, and the inclination of the luminaire head can be adjusted according to needs. In this way Streetlight P-Line and HP-Line is able to adapt to nearly any lighting situation. With customized sizes of mast flange the innovative LED luminaire can be fixed to all standard masts. A major advantage with refurbishments is that existing masts can still be used.



## Product diversity



## Off grid installations

Outdoor luminaires source their electrical operating energy from the public electricity grid and in order to illuminate roads, paths, town squares and building peripheries, electrical cables need to be routed.

The solution is the establishment of an energy grid independent lighting system. The energy for night time operation of the luminaires is by solar modules or wind generators and battery stored. Intelligent charging and load management ensures high availability of artificial light. The highly efficient, microprocessor operated ballast ensures attaining of the same photometric values as those archived by the version operated via the mains network.

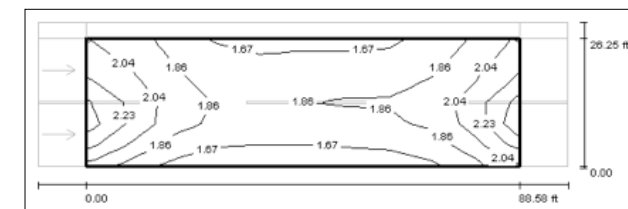
Sustainable, grid independent lighting systems are designed individually. The design of components is fundamentally dependent upon the geographical and installation situation, lighting requirements and other factors.

## Different light distributions

There are several optics for different light distributions available. This can be chosen individually related to the requirements of the project by the engineering company or client.

## Greater safety from optimal light distribution

Highly homogeneous illumination along the carriage-way even with wide mast distances Streetlight P-Line sets new standards in terms of light distribution. This means greater safety in traffic situations, because the vision of drivers need not be adapted to alternating brightening levels, meaning that drivers are able to more rapidly detect sudden obstacles. Objects and people are even clearly visible behind approaching vehicles with dazzling headlights. The basis for this technological progress is the perfect light distribution with high efficient optical lenses.



## Technical data available on the website

- Photometric data: EULUMDAT
- Technical specs: Catalogue





**CANDILUX GmbH**

Zementwerkstraße 17  
D-89584 Eching

Mail [info@candilux.de](mailto:info@candilux.de)

Tel +40 (0) 7391 | 50 02-30

Fax +49 (0) 7391 | 50 02-39

Web [www.candilux.de](http://www.candilux.de)

